

# Quick Installation Guide Outdoor AP

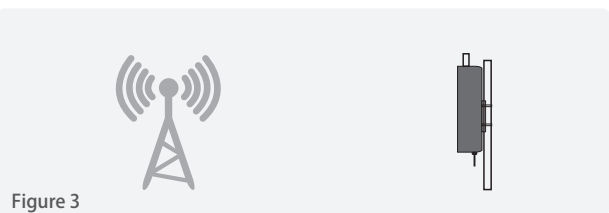
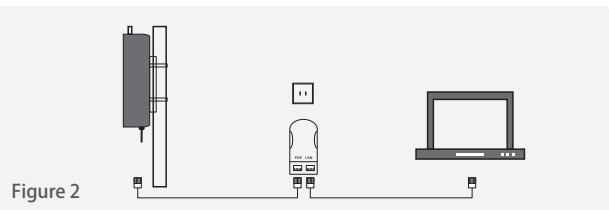
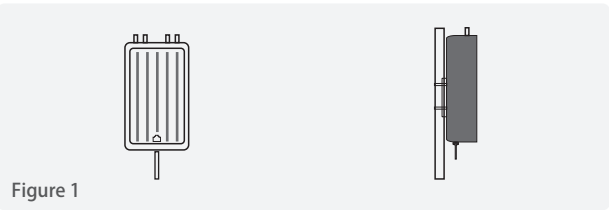
VER 1.0

## 01/Device installation

(\*This QIG uses 4 Antennas dual band AP as an example)

### • Device installation

- 1). Make sure the device is power off
- 2). Follow Figure 1 ,insert clamp hoop into the hole on backside of the enclosure
- 3). Fasten the AP to the pole(diameter 40-60mm) with clamp hoop,after confirming the angle and direction ,use screwdriver to fix the clamp hoop tightly.



### • Hardware connection

- 1). AP connects to the POE port of POE adapter through LAN cable(make sure the impedance of the LAN cable wires should be less than 6 Ω)
- 2). PC connects to the LAN port of POE adpter through LAN cable
- 3). Power on the POE adapter, POWER LED on the AP should light up normally
- 4). Check networking connection status on PC to verify whether PC is connected correctly with the AP, see Figure 2.

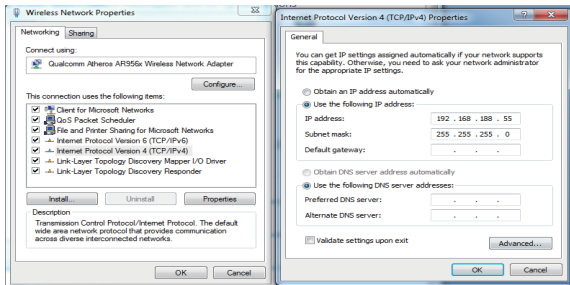
### • Installation Range

- 1). The straight distance should be within the range of AP signal
- 2). Deploy the LAN cable from indoor to outdoor location of AP installation. The LAN cable should follow 568B standard, and use the network cable tester to test.
- 3). The height of mounting pole should be 1.5M above the roof , the antenna of AP should face to the base station and in good alignment to make sure signal strength is the best.

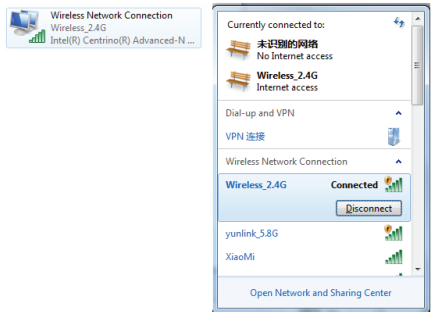
## 02/Device management

### 2.1 Connect PC by wireless

- 1). To connect an AP wirelessly, you need set the IP address of the TCP/IP properties of the wireless network card to 192.168.188.X (X is number range of 2-252) first, so that the AP and PC in the same IP segment, and set the subnet mask to 255.255.255.0, as shown in the following picture:



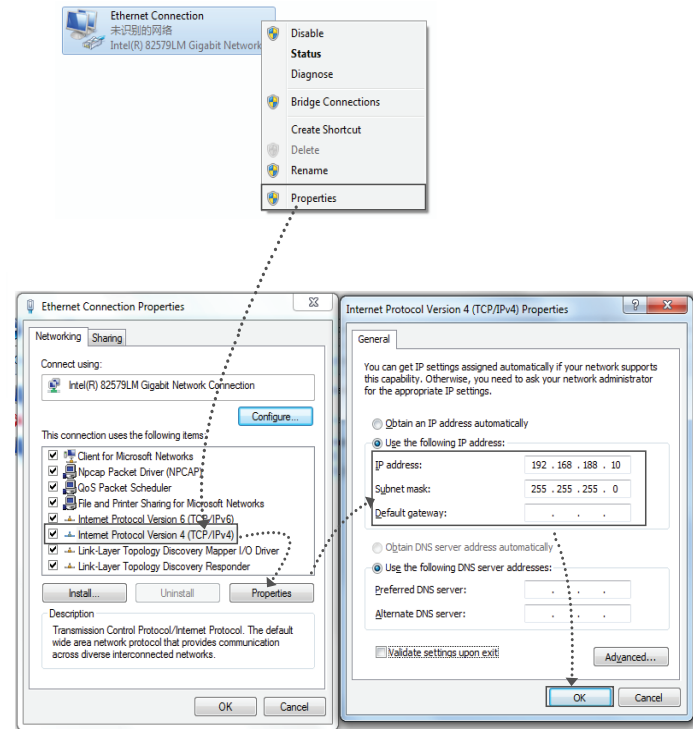
- 2). After setting the IP address of PC, connect PC with AP in wireless, double-click "Wireless network Connection", in the pop-up wireless SSID list, select "Wireless 2.4G", click "Connect", then enter the password in the pop-up password dialogue box, the default password is "66666666", click "OK" to connect.



尺寸：420X297mm  
双面印刷 有折位  
80g双胶书纸

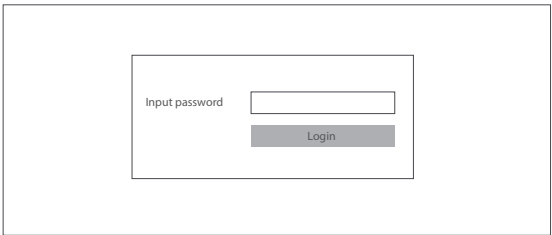
### 2.2 Connect PC by wired port

Using the wired connection, set the IP address of the TCP/IP properties of the wired network card to 192.168.188.X (X is number range of 2-252), and the PC will be the same IP segment as AP.

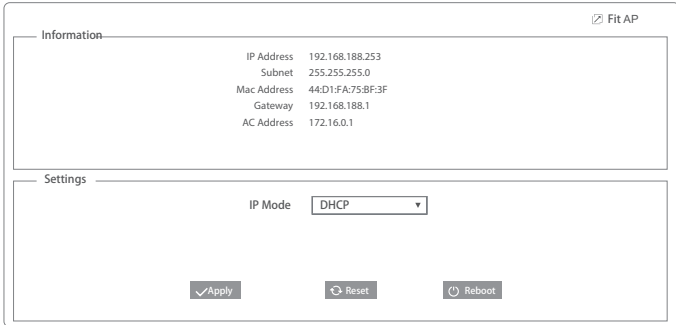


## 03/AP Configuration

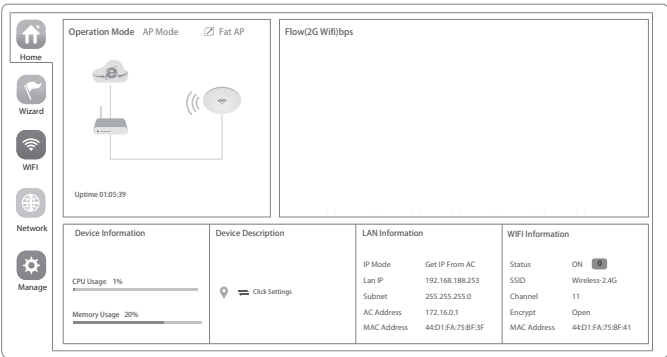
### 3.1 WEB Login from PC



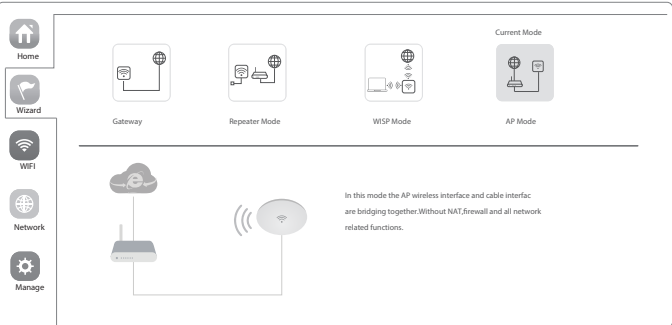
- 2.By default it is in Fit AP mode, users need click the button [Fit AP] at the right corner to change it to FAT AP mode if needed.



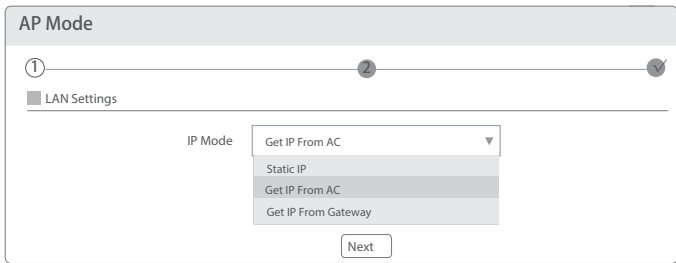
3.In FAT AP mode user interface home page is as shown below:



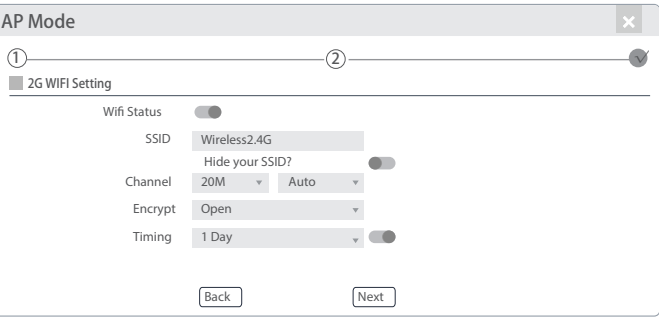
4.Setup Wizard page,choose AP mode as the current working mode.

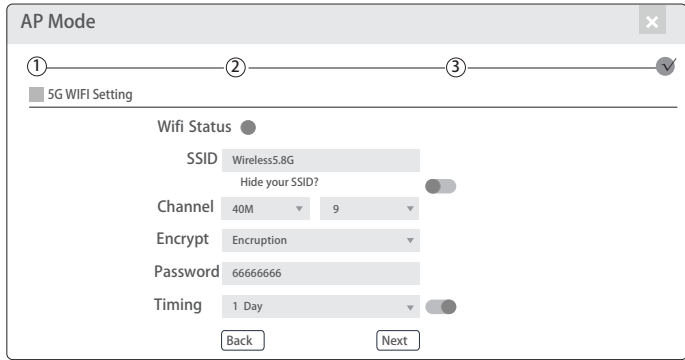


5. Enter AP Mode setup page,choose "Get IP from AC" in connection type, click Next.

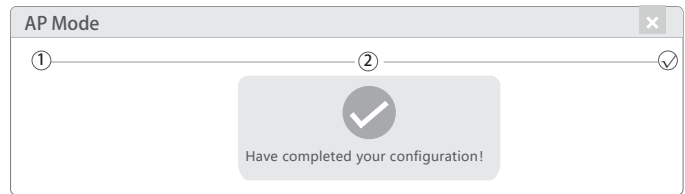


6. Enter Wifi setup page,set up SSID, Channel, Encryption parameters as below:



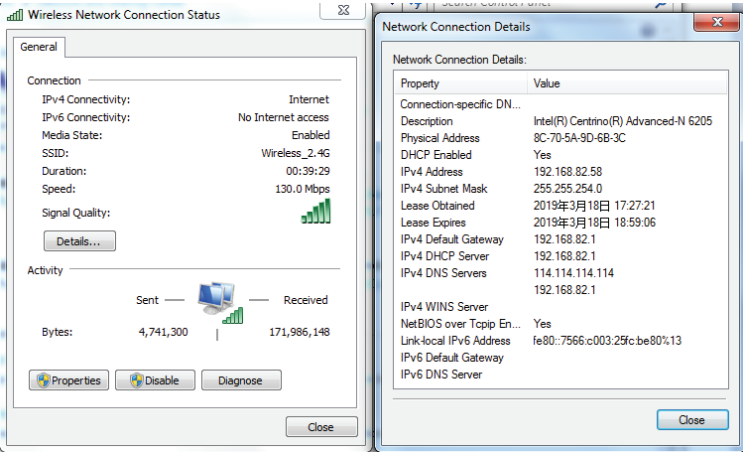


7.Click Next and setup completed



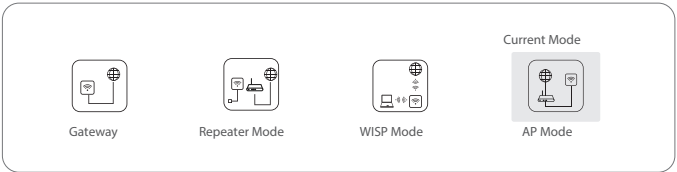
### 8.Wireless testing

Use Laptop or mobile phone to test whether the wireless network can surf the Internet:click wireless network ,select the wireless SSID, enter the password to connect the wireless AP, test whether you can surf the Internet.



Check the status of the wireless network connection: signal quality, speed, Bytes sent and received. Click on Details, check if the IP address and DNS server address etc. obtained correctly, confirm that the device is working properly.

### 3.2 Other mode



#### Gateway Mode

- Realize router function, WAN port connect with modem (ADSL or Fiber) , or WAN port connect internet by dynamic or static IP type.

#### Repeater mode

- Realize wireless bridge and forwarding without compatibility matching with the upper device.

#### WISP Mode

- Wireless ISP clients connect to the wireless base station by wireless, to realize local LAN internet connection sharing.

#### AP mode

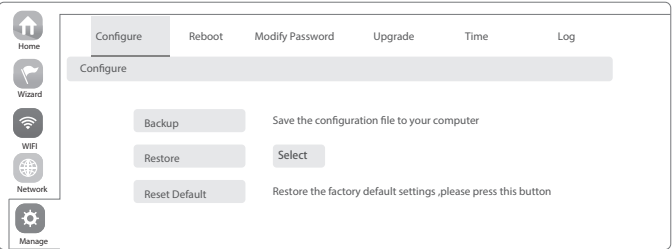
- Under AP mode, NAT, DHCP, firewall, and all WAN related functions are turned off, all wireless and wired interfaces are bridged together, no distinguishing between LAN and WAN.

#### Operation mode setup

Based on the Quick Setup Wizard for each mode shown in the above picture, Set the parameters and options that user needs, and click Next step until the settings for each operation mode are completed .

### 3.3 Device Management

Users can backup,reboot and reset to factory default settings through device management menu options. Also you can modify the WEB login password, upgrade firmware, time synchronization and system log statistics and other functional settings as shown in picture below.



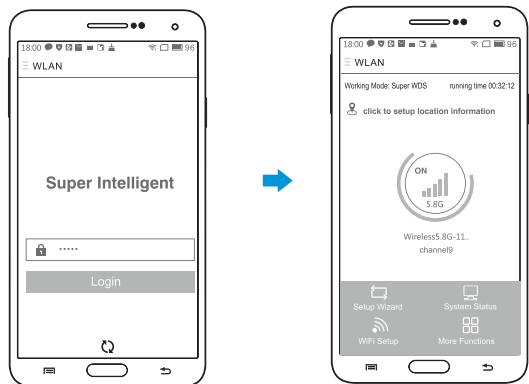
尺寸：420X297mm

双面印刷 有折位

80g双胶书纸

### 3.4 Use mobile phone to login

- Mobile phone login web page of AP (default password is admin)



- When mobile phone connect to AP through wireless, need to configure static IP according to below steps



①. Android system setup steps

#### ①. How to set static IP for Android system mobile phone

Open the phone click "settings", choose "WLAN", find and long press the SSID of the AP, pop-up menu select "Static IP", set a static IP 192.168.188.X (X can not be 253 or 252) (the static IP should be same IP segment as AP) for mobile phone, then input the right Gateway IP, network mask and DNS.

#### ②. How to set static IP for IOS system mobile phone

Click "settings", choose "Wi-Fi", click exclamation mark (i) after connect wireless signal successfully, setup the static IP 192.168.188.X (X can not be 253 or 252), then input gateway IP, subnet mask and DNS, please note: the static IP should be in the same IP segment as AP.

### FAQ and Solutions

#### Q1: Forget login name and password ?

A1: Reset to factory default settings: press the reset button for above 10 seconds and release it , the device will reboot and reset to factory default settings automatically.

#### Q2: Can not Login wireless AP management WEB interface ?

- A2: 1.Check if PC with static IP and if this IP is in the same IP segment of AP, make sure it is not set to other IP range.  
2.Reset AP to factory default settings and re-connect to AP.  
3.Make sure wireless AP IP address is 192.168.188.253 and not occupied by other devices .  
4.Check if there is something wrong with PC and Ethernet cable ,recommend to use CAT 5e or above UTP cable .

#### Q3: Forget wireless network password ?

A3: 1.Connect AP by wired ,login WEB management interface ,click wireless settings--> basic settings-->Encryption-->Password, and set a new password for wireless network.  
2.Reset AP to factory default settings, the default password is 66666666.

#### Q4: Can not obtain IP Address ?

- A4: 1.In gateway or WISP mode, check if DHCP server is enabled  
2.In repeater or AP mode, check if upper network connection is normal ,or if LAN network DHCP server is working well .

#### Q5: How to change FIT AP to FAT AP ?

A5: Switch FAT and FIT mode by clicking the button at right corner ,then device will reboot .After rebooting,please clear history buffer files in IE and then login .

NOTE: Once the device is switched to FAT AP mode, AC controller will not be able to manage and control it .

#### Q6: AC controller device list can not get AP devices ?

A6: The mode for AC controller and AP are different, AC controller with model prefixed AC is used to control FAT AP, the model prefixed in FAC or BW is used to control FIT AP .

NOTE: All the APs support both FAT and FIT AP mode , the default mode is FIT AP mode.

\*This manual is only used for instructions and provides an accurate information as we can , but we can not make sure all the information in this manual is correct.This manual may be updated because of the products upgrade,we have the right to revise the manual without any notice.